

# The Doctor and the Patient



JESUS HAD MANY FRIENDS



BUT SOME WERE EXTRA SPECIAL. THESE WERE HIS 'DISCIPLES'.

JESUS ONCE ASKED A TAX-COLLECTOR CALLED 'MATTHEW' TO BE ONE OF HIS TEAM

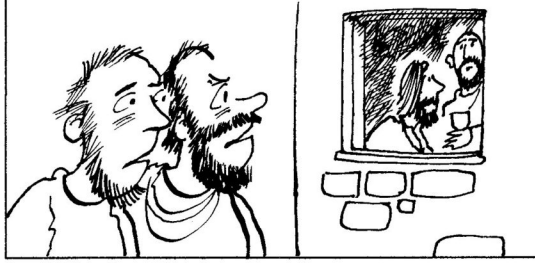


MATTHEW AGREED TO FOLLOW JESUS

JESUS WENT TO HAVE A MEAL AT MATTHEW'S HOUSE

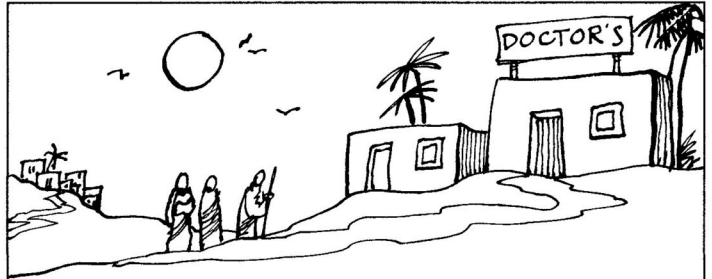


BUT MANY PEOPLE COMPLAINED ABOUT THIS. THEY THOUGHT MATTHEW WAS A BAD MAN - AND JESUS SHOULD IGNORE HIM.



JESUS' REPLY WAS VERY STRAIGHT FORWARD.

HE EXPLAINED THAT MATTHEW NEEDED HELP, NOT CRITICISM.



"IT'S NOT THE WELL THAT NEED A DOCTOR - BUT THE SICK!"  
see Luke 5:27-32